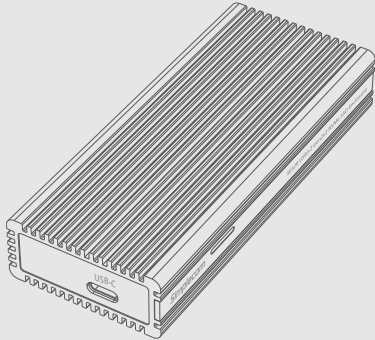


# Simplecom®

## SE528

### NVMe M.2 SSD to USB 3.2 Gen 2x2 USB-C Enclosure 20Gbps

#### User Manual



*Simplify Your Life*

## About Product

SE528 is a portable and durable NVMe M.2 enclosure with fastest version USB 3.2 Gen 2x2 interface and support data transfer rate up to 20Gbps, to unleash the full potential of high performance NVMe M.2.

The robust design features innovative heat sink style aluminium housing for effective heat dissipation to protect the SSD inside. It also features an internal thermal pad that transfers heat away from the SSD to case for maximum heat dissipation, ensuring your SSD operates at lower temperature for optimal performance.

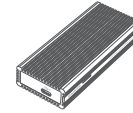
## Features

- Designed for M Key NVMe M.2 2280 SSD only (20x80mm)
- Convert an NVMe M.2 SSD to a USB-C portable drive
- USB 3.2 Gen 2x2 interface support data transfer rate up to 20Gbps
- Heat sink style aluminium case for excellent heat dissipation
- Internal thermal pad and copper heat sink for effective heat transfer
- Plug and play, no drivers required
- LED indicator for power and activity status

## Specifications

- Model: SE528
- Interface: USB-C (USB 3.2 Gen 2x2)
- Transfer Rate: up to 20Gbps
- Material: Aluminium
- Compatible M.2: NVMe M.2 SSD
- Compatible M.2 Size: 2280 (20x80mm)
- Dimension: 104x36x14.5mm (LxWxH)
- Operating System: Windows 7 and above, Mac OS 10.8 and above

## Package Contents



M.2 NVMe SSD Enclosure



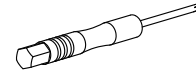
USB-C Cable



Thermal Conductive Pad



Copper heat sink



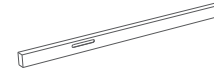
Screw Driver



Screw A x1



Screw B x2



Acrylic side cover

## Compatibility

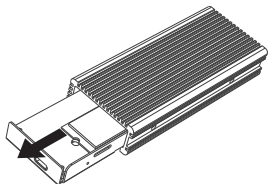
SE528 only support NVMe based M.2 2280 SSD (20x80mm), doesn't support SATA based M.2 SSD (B Key or B+M Key) and AHCI PCIe based M.2 SSD (M Key)



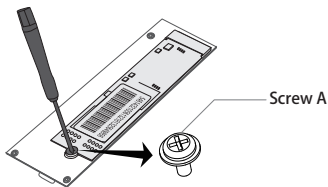
"M key" edge connector

## Installation

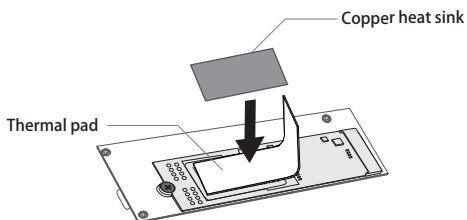
1. Slide the SSD tray from the aluminum case



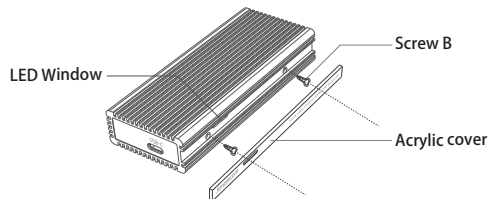
2. Insert the NVMe SSD to the M Key Socket, then fasten it by Screw A



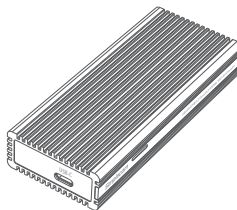
3. Remove the foil on both sides of the thermal pad, then apply it on the SSD, and put the copper heat sink on top of the thermal pad



4. Slide the SSD tray back to the aluminum case, then fasten two screws B, please make sure to align the LED indicator window with the aluminum case



5. Stick the acrylic side cover to finish installation



## Note

- SE528 only support NVMe based M.2 2280 SSD (20x80mm), doesn't support SATA based M.2 SSD (B Key or B+M Key) and AHCI PCIe based M.2 SSD (M Key)
- SE528 only can reach data transfer rate up to 20Gbps when a high performance NVMe M.2 SSD installed and connecting to PC with USB 3.2 Gen 2x2 host port. Otherwise, speed will be limited to 5Gbps or 10Gbps according max speed support of SSD and USB port on PC. You can add a USB 3.2 Gen 2x2 PCI-E expansion card if your PC doesn't support USB 3.2 Gen 2x2.

## Safely Disconnect

Windows: Double-click on the Safely Remove icon in your Windows System Tray. This will launch the Safely Remove program. Then click on the device you wish to remove and click on the Stop button.

Mac: In Mac OS the drive appears as an icon on the desktop. Before unplugging the drive, it needs to be dismantled by dragging the drive to the Trash Can, once the activity light has gone out, you can safely remove the drive.

## Warranty

This product includes one (1) year repair/replacement warranty provided by Simplecom Australia. This warranty is non-transferable and is limited to the original purchaser.

Our goods come with guarantees that cannot be excluded under the Australian Consumer Law. You are entitled to a replacement or refund for a major failure and for compensation for any other reasonably foreseeable loss or damage. You are also entitled to have the goods repaired or replaced if the goods fail to be of acceptable quality and the failure does not amount to a major failure.

For our assistance with regards to warranty please email to [support@simplecom.com.au](mailto:support@simplecom.com.au) or create a support ticket at <http://www.simplecom.com.au>

© Simplecom Australia All Rights Reserved. Simplecom is a registered trademark of Simplecom Australia Pty Ltd. All other trademarks are property of their respective owner. Specifications and external appearance are subject to change without notice. Warranty and technical support covering this product are only valid in the country or region of purchase.