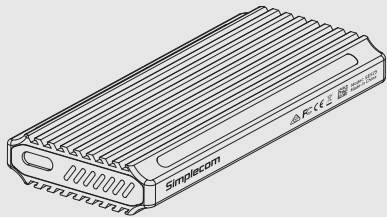




SE525 Tool-Free M.2 SSD to USB-C Enclosure

SE525

User Manual



Simplify Your Life

Features

- Dual Protocol support for both NVMe and SATA M.2 SSD
- Convert M Key or B+M Key M.2 SSD to a USB portable drive
- USB 3.2 Gen 2 interface support transfer speeds up to 10Gbps*
- Aluminium case for durability and excellent heat dissipation
- Dynamic RGB light effect for power and activity status**
- Tool Free design allow to mount M.2 SSD in seconds without tools
- Supports USAP for faster data rate and maximum performance
- Supports TRIM command for improved data writing
- Plug and play, no driver required

Specifications

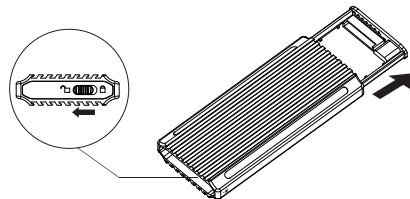
- Model: SE525
- Interface: USB-C (USB 3.2 Gen 2)
- Housing Material: Aluminium, ABS Plastic
- Transfer Rate: NVMe M.2 up to 10Gbps, SATA M.2 up to 6Gbps
- Compatible M.2 Protocol: NVMe M.2, SATA M.2
- Compatible M.2 Size: 2242, 2260, 2280
- Dimension: 98x44x13mm (LxWxH)
- Operating System: Windows 7 and above, MacOS 10.8 and above

*SE525 supports both NVMe and SATA protocol based M.2 SSD (M Key or B+M Key), bandwidth will be limited to 6Gbps when using SATA M.2 SSD, as maximum transfer rate of SATA protocol is 6Gbps.

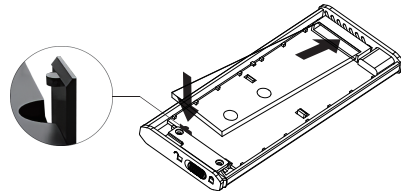
**RGB light effect is fixed and can't be programmed, breathing effect when powered, and switch to flowing effect during data transfer.

Installation

1. Switch and unlock the inner tray, then pull out the inner tray of the SSD enclosure

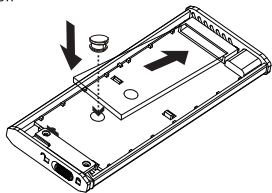


2. Insert and plug the M.2 SSD to the M.2 socket on the inner tray firmly

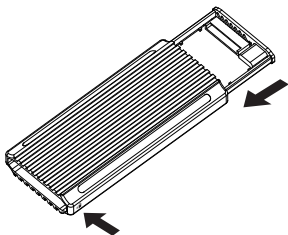


3. For full size 2280 M.2 SSD, standoff is not required, you can secure the SSD with plastic clip at the end of the enclosure

4. For smaller size 2242 or 2260 M.2 SSD, secure the SSD with standoff



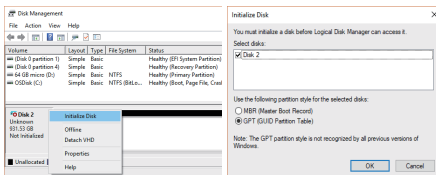
5. Finally, push the inner tray into the SSD enclosure to complete the installation, please note the lock position and slide to the right position to lock the inner tray



6. Connect the USB cable to enclosure and computer, you may need to format or assign a driver letter before using

Initialize New Drive

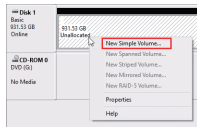
You need to initialize new disk in Disk Management if a new M.2 SSD installed. To do so, in the search box on the taskbar, type **Disk Management**. You can also search **Computer Management** instead, and then go to **Storage > Disk Management**.



In Disk Management, right-click the disk you want to initialize, and then click **Initialize Disk** (shown above). If the disk is listed as Offline, first right-click it and select **Online**. Choose **GPT partition** style then click OK. GPT is more robust and allows for volumes bigger than 2 TB. The older Master Boot Record (MBR) disk type is used by older 32-bit PCs.

Format New Drive

1. Select and right-click the unallocated space on the drive, then select **New Simple Volume**.
2. Select **Next**, specify the size of the volume (you'll likely want to stick with the default, which uses the whole drive), and then select **Next**.
3. Specify the drive letter you want to assign and then select **Next**.



Safely Disconnect

Windows: Double-click on the Safely Remove icon in your Windows System Tray. This will launch the Safely Remove program. Then click on the device you wish to remove and click on the Stop button.

Mac: In Mac OS the drive appears as an icon on the desktop. Before unplugging the drive, it needs to be dismantled by dragging the drive to the Trash Can, once the activity light has gone out, you can safely remove the drive.

Warranty

This product includes one (1) year repair/replacement warranty provide by Simplecom Australia. This warranty is non-transferable and is limited to the original purchaser.

Our goods come with guarantees that cannot be excluded under the Australian Consumer Law. You are entitled to a replacement or refund for a major failure and for compensation for any other reasonably foreseeable loss or damage. You are also entitled to have the goods repaired or replaced if the goods fail to be of acceptable quality and the failure does not amount to a major failure.

For our assistance with regards to warranty please email to support@simplecom.com.au or create a support ticket at <http://www.simplecom.com.au>