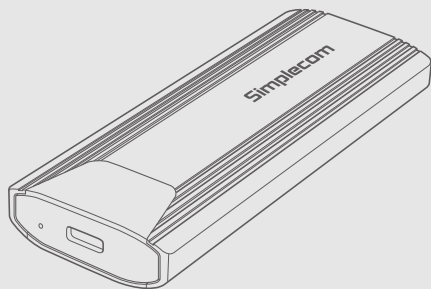


Simplecom®

SE504 NVMe M.2 SSD to USB-C
Tool-free Enclosure

User Manual



Simplify Your Life

Features

- Designed for M Key NVMe M.2 SSD only
- Convert an NVMe M.2 SSD to a USB-C portable drive
- USB 3.2 Gen 2 interface support data transfer speeds up to 10Gbps
- Aluminium case for durability and excellent heat dissipation
- Tool-Free, quick and easy installation of SSDs without any tools
- Plug and play, no drivers required
- LED indicator for power and activity status
- Compact size and lightweight for enhanced portability

Specifications

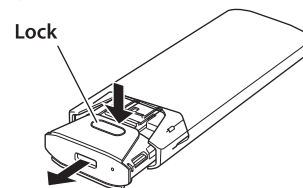
- Model: SE504
- Interface: USB-C (USB 3.2 Gen 2)
- Material: Aluminium + ABS
- Compatible M.2: NVMe M.2 SSD
- Compatible M.2 Size: 2230, 2242, 2260, 2280
- Dimension: 112x40x13.4mm (LxWxH)
- Operating System: Windows 7 and above, MacOS 10.5 and above

Important Note

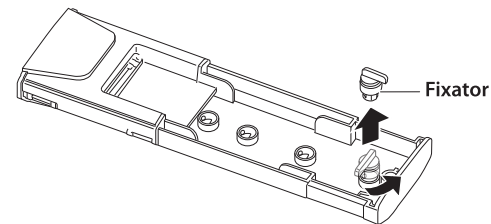
- For NVMe M.2 SSD Only, Not compatible with SATA M.2 SSD
- 10Gbps data transfer rate is only for USB3.2 Gen2 enabled computer (also known as USB3.1 Gen2)
- For new SSD, you need to go into the disk management and initialize the SSD
- Due to high speed of NVMe M.2 SSD, the temperature is higher than traditional USB hard drive, NVMe M.2 SSD is designed to work stably at 60-70°C in heavy workload

Installation

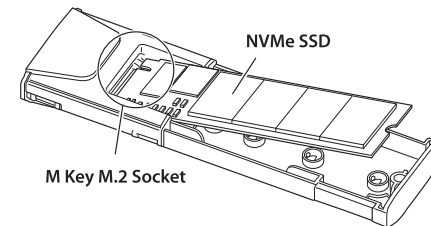
1. Press down the lock button, and then pull out the inner tray of the SSD enclosure



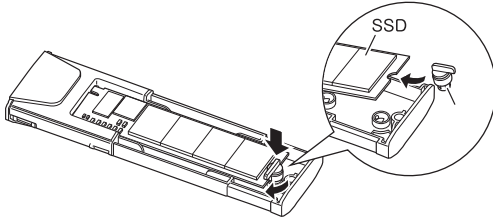
2. Rotate the fixator 90 degree counterclockwise to unlock it from the inner tray



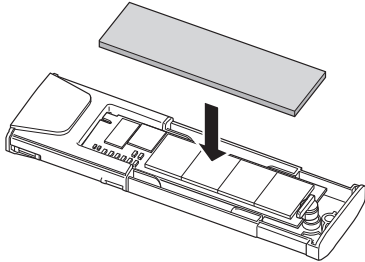
3. Insert M.2 SSD to the M.2 socket on the inner tray



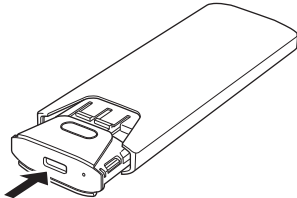
4. Plug the M.2 SSD into the socket firmly, then rotate the fixator 90 degree clockwise to lock the M.2 SSD on the tray



5. Place the thermal pad on the SSD



6. Finally, push the inner tray into the SSD enclosure to complete the installation



Compatibility

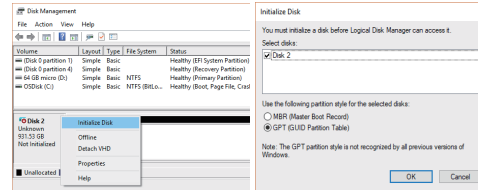
SE504 only support NVMe PCIe based M.2 SSD (M Key below), doesn't support SATA based M.2 SSD (B Key or B+M Key) and AHCI PCIe based M.2 SSD (M Key)



"M key" edge connector

Initialize New Drive

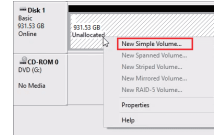
You need to initialize new disk in Disk Management if a new M.2 SSD installed. To do so, in the search box on the taskbar, type **Disk Management**. You can also search **Computer Management** instead, and then go to **Storage > Disk Management**.



In Disk Management, right-click the disk you want to initialize, and then click **Initialize Disk** (shown above). If the disk is listed as Offline, first right-click it and select **Online**. Choose **GPT partition** style then click OK. GPT is more robust and allows for volumes bigger than 2 TB. The older Master Boot Record (MBR) disk type is used by older 32-bit PCs.

Format New Drive

1. Select and right-click the unallocated space on the drive, then select **New Simple Volume**.
2. Select **Next**, specify the size of the volume (you'll likely want to stick with the default, which uses the whole drive), and then select **Next**.
3. Specify the drive letter you want to assign and then select **Next**.
4. Specify the file system you want to use, select **Next**, and then **Finish**.



Safely Disconnect

Windows: Double-click on the Safely Remove icon in your Windows System Tray. This will launch the Safely Remove program. Then click on the device you wish to remove and click on the Stop button.

Mac: In Mac OS the drive appears as an icon on the desktop. Before unplugging the drive, it needs to be dismantled by dragging the drive to the Trash Can, once the activity light has gone out, you can safely remove the drive.

Warranty

This product includes one (1) year repair/replacement warranty provide by Simplecom Australia. This warranty is non-transferable and is limited to the original purchaser.

Our goods come with guarantees that cannot be excluded under the Australian Consumer Law. You are entitled to a replacement or refund for a major failure and for compensation for any other reasonably foreseeable loss or damage. You are also entitled to have the goods repaired or replaced if the goods fail to be of acceptable quality and the failure does not amount to a major failure.

For our assistance with regards to warranty please email to support@simplecom.com.au or create a support ticket at <http://www.simplecom.com.au>

© Simplecom Australia All Rights Reserved. Simplecom is a registered trademark of Simplecom Australia Pty Ltd. All other trademarks are property of their respective owner. Specifications and external appearance are subject to change without notice. Warranty and technical support covering this product are only valid in the country or region of purchase.