

Simplecom[®]

SE503 NVMe PCIe (M Key) M.2 SSD
to USB 3.1 Gen 2 Enclosure

User Manual



Simplify Your Life

Simplify Your Life

www.simplecom.com.au

© Simplecom Australia All Rights Reserved. Simplecom is a registered trademark of Simplecom Australia Pty Ltd. All other trademarks are property of their respective owner. Specifications and external appearance are subject to change without notice. Warranty and technical support covering this product are only valid in the country or region of purchase.

 www.simplecom.com.au  support@simplecom.com.au

| Specifications

- Model: SE503
- Name: NVMe (M Key) M.2 SSD to USB 3.1 Gen 2 Enclosure
- Interface: USB 3.1 Gen 2 Type C
- Dimension: 101x34x8mm (LxWxH)
- Compatible SSD: NVMe (M Key) M.2 SSD
- Compatible M.2 size: 2230 / 2242 / 2260 / 2280

| Features

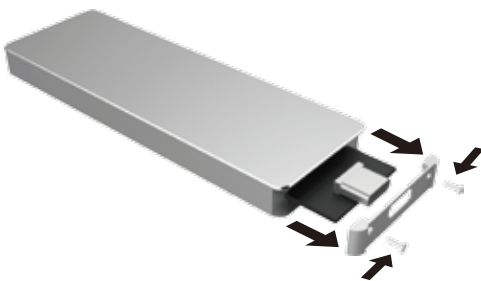
- Designed for M Key PCI-Express NVMe based SSDs only*
- Convert an NVMe M.2 SSD to a USB 3.1 external drive
- Premium aluminium exterior with small, portable design
- Latest USB 3.1 Gen 2 interface up to 10Gbps transfer rate
- USB Type C to Type A Converter included**
- Plug and play, no drivers required

| Package Contents

SE503 NVMe SSD Enclosure	1Pcs
USB C to USB C Cable (USB3.1 Gen 2)	1Pcs
USB Type C to Type A Converter	1Pcs
Screw driver	1Pcs

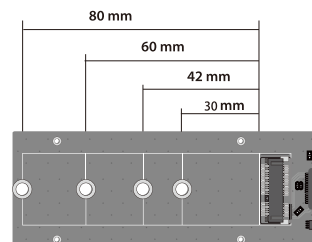
| Installation

1. Remove the front plate and slide out the internal drive tray
2. Place your M.2 SSD next to the drive tray and note the hole that matches the height of your drive
3. Plug your M.2 SSD into the corresponding connector on the tray, please note the connector of M.2 SSD is keyed so that it only fits M Key
4. Slide the drive tray back into the enclosure
5. Place the cover plate over the connector and the circuit board
6. Secure the plate in place by inserting the two drive tray screws



| Compatibility

Compatible NVMe M.2 SSD size: 2230 / 2242 / 2260 / 2280



Note:

*SE503 only support NVMe PCIe based M.2 SSD (M Key below), doesn't support SATA based M.2 SSD (B Key or B+M Key) and AHCI PCIe based M.2 SSD (M Key)



"M key" edge connector

**Bandwidth will be limited to 5Gbps (USB3.1 Gen 1) when using USB Type C to Type A Converter

| Safely Disconnect

Windows: Double-click on the Safely Remove icon in your Windows System Tray. This will launch the Safely Remove program. Then click on the device you wish to remove and click on the Stop button.

Mac: In Mac OS the drive appears as an icon on the desktop. Before unplugging the drive, it needs to be dismounted by dragging the drive to the Trash Can, once the activity light has gone out, you can safely remove the drive.

| Warranty

This product includes one (1) year repair/replacement warranty provide by Simplecom Australia. This warranty is non-transferable and is limited to the original purchaser.

Our goods come with guarantees that cannot be excluded under the Australian Consumer Law. You are entitled to a replacement or refund for a major failure and for compensation for any other reasonably foreseeable loss or damage. You are also entitled to have the goods repaired or replaced if the goods fail to be of acceptable quality and the failure does not amount to a major failure.

For our assistance with regards to warranty please email to support@simplecom.com.au or create a support ticket at <http://www.simplecom.com.au>