



SE502 M.2 SSD (B Key)
to USB 3.0 Enclosure

User Manual



Simplify Your Life

Simplify Your Life

www.simplecom.com.au

© Simplecom Australia All Rights Reserved. Simplecom is a registered trademark of Simplecom Australia Pty Ltd. All other trademarks are property of their respective owner. Specifications and external appearance are subject to change without notice. Warranty and technical support covering this product are only valid in the country or region of purchase.

www.simplecom.com.au support@simplecom.com.au

Specifications

- Model: SE502
- Name: M.2 SSD (B Key) to USB 3.0 External Enclosure
- Interface: USB 3.0 (USB3.1 Gen 1)
- Dimension: 112x46x8.8mm (LxWxH)
- Compatible SSD: SATA based M.2 (B Key or B+M Key) SSD
- Compatible M.2 size: 2230 / 2242 / 2260 / 2280

Features

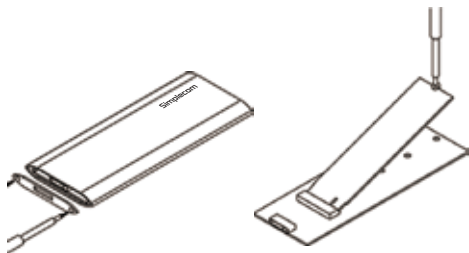
- Designed for SATA protocol based M.2 (B Key or B+M Key) SSD*
- Convert a M.2 SSD to an USB external drive
- Premium aluminium exterior with small, portable design
- USB 3.0 (USB3.1 Gen 1) interface up to 5Gbps data transfer rate
- Support USAP for added data transfer performance
- Plug and play, no drivers required
- Compatible with Windows 7 and above, Mac OS 10.6 and above

Package Contents

SE502 M.2 SSD Enclosure	1Pcs
USB 3.0 Micro-B to A Cable	1Pcs
Screw with Washer	1Pcs
Screw driver	1Pcs

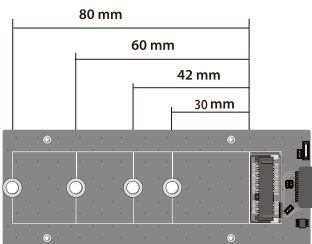
Installation

1. Remove the front plate and slide out the internal drive tray
2. Place your M.2 SSD next to the drive tray and note the hole that matches the height of your drive
3. Plug your M.2 SSD into the corresponding connector on the tray, please note the connector of M.2 SSD is keyed so that it only fits B Key
4. Slide the drive tray back into the enclosure
5. Place the cover plate over the connector and the circuit board
6. Secure the plate in place by inserting the two drive tray screws



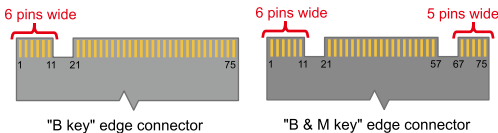
Compatibility

Compatible SATA Based M.2 SSD size: 2230 / 2242 / 2260 / 2280



Note:

*SE502 is NOT Designed for NVMe PCIe M.2 SSD, will not fit M Key Only SSD Module. Compatible with SATA protocol based M.2 (B Key Only or B+M key) SSD only.



Safely Disconnect

Windows: Double-click on the Safely Remove icon in your Windows System Tray. This will launch the Safely Remove program. Then click on the device you wish to remove and click on the Stop button.

Mac: In Mac OS the drive appears as an icon on the desktop. Before unplugging the drive, it needs to be dismantled by dragging the drive to the Trash Can, once the activity light has gone out, you can safely remove the drive.

Warranty

This product includes one (1) year repair/replacement warranty provide by Simplecom Australia. This warranty is non-transferable and is limited to the original purchaser.

Our goods come with guarantees that cannot be excluded under the Australian Consumer Law. You are entitled to a replacement or refund for a major failure and for compensation for any other reasonably foreseeable loss or damage. You are also entitled to have the goods repaired or replaced if the goods fail to be of acceptable quality and the failure does not amount to a major failure.

For our assistance with regards to warranty please email to support@simplecom.com.au or create a support ticket at <http://www.simplecom.com.au>