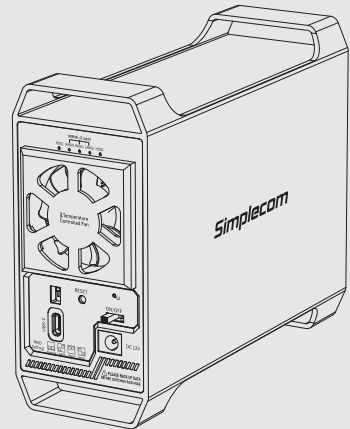




SE482 SuperSpeed USB Dual-Bay 3.5" HDD RAID Enclosure

SE482

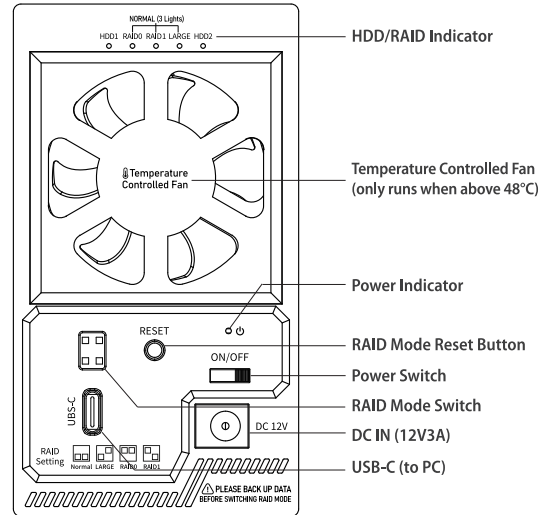
User Manual



WWW.SIMPLECOM.COM.AU

About Product

This dual-bay 3.5" hard drive enclosure is a versatile storage solution that offers various RAID configurations, fast data transfer, durability, and features to help manage and protect your data, making it a convenient solution for expanding storage capacity, enhancing data security, or configuring drives to suit different needs.



Package Contents

- 1x Dual Bay HDD RAID Enclosure
- 1x Power Adapter
- 1x USB-C to USB-C Cable
- 1x Screws set
- 1x USB-C to USB-A Cable
- 1x User Manual

Features

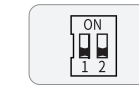
- Dual bay 3.5" SATA hard drive enclosure with 4 operating modes
- Connect two 3.5-inch SATA hard drives simultaneously
- Support RAID 0, RAID 1, Large (JBOD) and Normal modes
- USB-C interface support SuperSpeed data transfer rate up to 5Gbps
- Auto sleep function, helping to extend the lifespan of HDDs
- Temperature controlled fan for optimal and silent operation*
- Aluminium case for durability and excellent heat dissipation
- Plug and play, no additional driver software required
- LED light indicates RAID mode and HDD activity status

Specifications

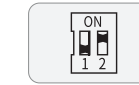
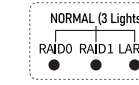
- Model: SE482
- Interface: USB-C (USB 3.2 Gen1)
- Transfer Rate: up to 5Gbps
- HDD Support: 2x 3.5" SATA HDD
- Operating Modes: RAID 0, RAID 1, Large, Normal
- Cooling Fan: 5CM (Temperature controlled, only runs when above 48°C)
- Main material: Aluminium, ABS Plastic
- Power Input: DC 12V3A
- Dimensions: 184 x 143 x 65mm (LxWxH)
- Weight: 530g (without HDD)
- Operating Systems: Windows 7 and above, Mac OS 10.8 and above

*Once the enclosure's temperature reaches 48°C, the fan will automatically turn on and continue to operate until the temperature drops below 48°C. This feature ensures that the fan operates only when necessary.

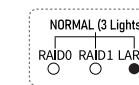
RAID Modes



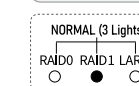
NORMAL: All 3 mode indicators are on Enclosure operates as a standard external hard drive enclosure with no RAID configuration, treating each drive as an independent storage device. Two hard drives show separate drive letters on computer.



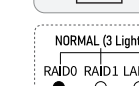
LARGE (JBOD): LARGE indicator is on In this mode, the drives are presented as a single large drive with no redundancy or striping. e.g. combine 2x 5TB drives to a single 10TB drive. It will merge capacity of 2 hard drives and makes it easy to manage.



RAID 1 (Mirroring): RAID 1 indicator is on Disk mirroring mode, providing data redundancy and fault tolerance. It's the replication of data to two HDDs, which makes files can be restored easily when one hard drive is faulty.

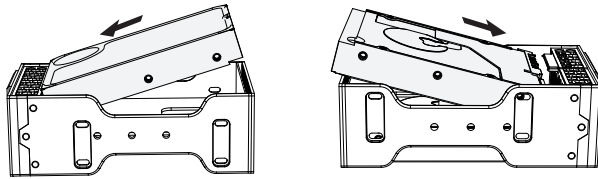


RAID 0 (Striping): RAID 0 indicator is on Disk striping mode, dividing data into blocks and spreading the data blocks across two HDDs. This will increase reading and writing speed, but it is not recommended for storing important data. One faulty hard drive will incur loss of entire data.

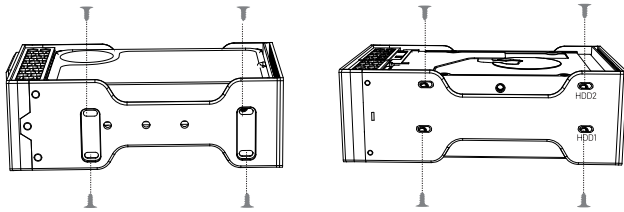


Installation

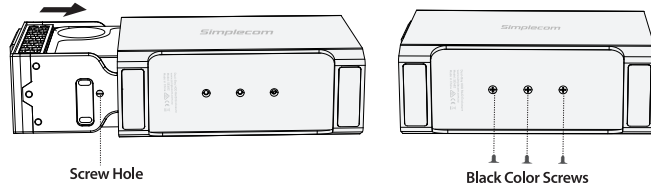
1. Align the SATA connector, insert 2x 3.5" SATA hard drives on each side of the plastic tray.



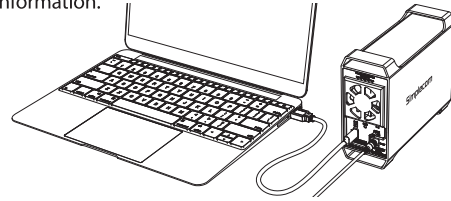
2. Secure two hard drives to the plastic tray with 8 silver color screws (4 screws for each hard drive).



3. Align the three screw holes on the plastic tray with the three holes on the aluminum housing, then fasten them with 3 black color screws.



4. Plug the power adapter and connect the enclosure to PC, set the **RAID Switch** to the right mode you need, then Press and Hold the **RESET button** for about 5 seconds to activate, please refer to next section **Change RAID Mode** for more information.



 **PLEASE BACK UP DATA BEFORE SWITCHING RAID MODE**

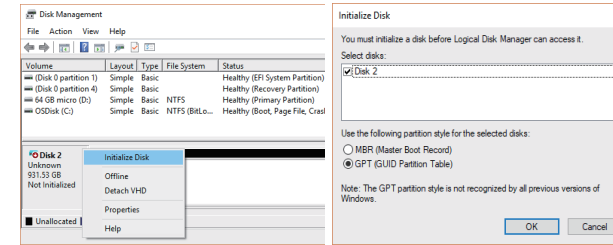
Change RAID Mode

Changing of RAID mode will erase ALL data on two hard drives, please backup if any important data before changing of RAID mode.

1. Please plug the power adapter and connect the enclosure to PC, make sure the enclosure is not in sleep mode and hard drives are spinning
2. Use a small screw driver to change the **RAID Switch** to the right mode you need, please note the new mode you set won't take effect until you perform next step
3. Press and hold the **RESET button** with a small screw drives for about 5 seconds, then release
4. The enclosure will restart automatically with new mode, and new mode indicator is on
5. You need to open **Disk Management** to initialize and format the drive, please refer to next section **Partition and Formatting** for more details

Partition and Formatting

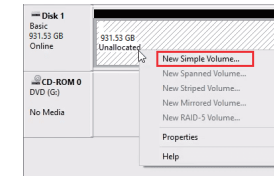
If you've installed new HDDs or switched to a different RAID mode, you should initialize the new disk(s). To do so, in the search box on the taskbar, type **Disk Management**. You can also search **Computer Management** instead, and then go to **Storage > Disk Management**.



In Disk Management, right-click the disk you want to initialize, and then click **Initialize Disk** (shown above). If the disk is listed as Offline, first right-click it and select **Online**. Choose **GPT partition** style then click OK. GPT is more robust and allows for volumes bigger than 2 TB. The older Master Boot Record (MBR) disk type is used by older 32-bit PCs.

Format New Drive

1. Select and right-click the unallocated space on the drive, then select **New Simple Volume**.
2. Select **Next**, specify the size of the volume (you'll likely want to stick with the default, which uses the whole drive), and then select **Next**.
3. Specify the drive letter you want to assign and then select **Next**.
4. Specify the file system you want to use, select **Next**, and then **Finish**.



Safely Disconnect

Windows: Look for the Safely Remove Hardware icon on the taskbar (right side system tray area). If you don't see it, select Show hidden icons . Click the icon and select the hardware you want to eject.

Mac: In Mac OS the drive appears as an icon on the desktop. Before unplugging the drive, it needs to be dismounted by dragging the drive to the Trash Can, once the activity light has gone out, you can safely remove the drive.

Warranty

1 Year limited Warranty. Our goods come with guarantees that cannot be excluded under the Australian Consumer Law. You are entitled to a replacement or refund for a major failure and for compensation for any other reasonably foreseeable loss or damage. You are also entitled to have the goods repaired or replaced if the goods fail to be of acceptable quality and the failure does not amount to a major failure. For our assistance with regards to warranty please email to support@simplecom.com.au or create a support ticket at <http://www.simplecom.com.au>

© Simplecom Australia All Rights Reserved. Simplecom is a registered trademark of Simplecom Australia Pty Ltd. All other trademarks are property of their respective owner. Specifications and external appearance are subject to change without notice. Warranty and technical support covering this product are only valid in the country or region of purchase.

 www.simplecom.com.au  support@simplecom.com.au