

Simplecom[®]

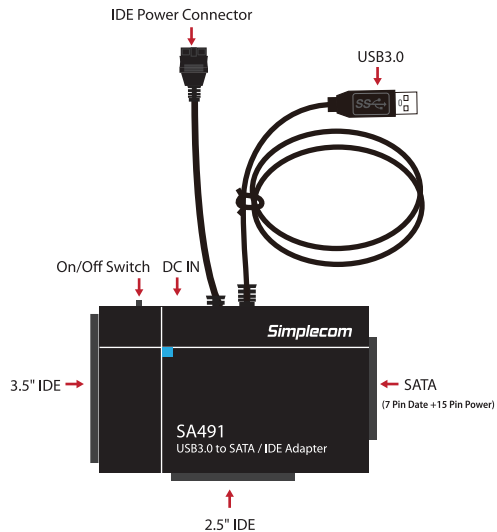
SA491 USB3.0 to SATA / IDE Adapter

User Manual

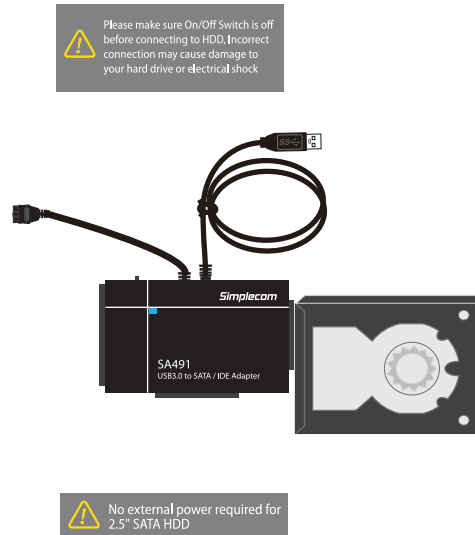


For 2.5", 3.5" & 5.25" SATA and IDE HDD, SSD & ODD

Product

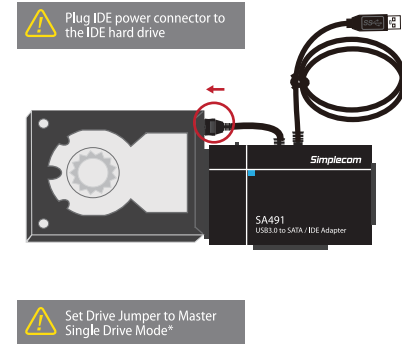


For 2.5"/3.5"/5.25" SATA Device



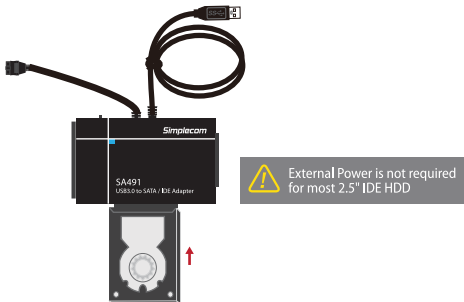
For 3.5"/5.25" PATA(IDE) Device

Built-in IDE power connector, for easy access of 3.5" or 5.25" IDE Drive



*For Jumper settings, please refer to your hard drive manufacturer's documentation.

| For 2.5" PATA(IDE) Device



| Connect to PC via USB Cable

1. Once securely connected, you may connect the adapter's USB to a free USB port on your PC, then switch ON the power adapter.
2. When connected properly, the hard drive should be automatically detected and begin "AutoPlay".
3. If you can't find the drive, you may need to open Disk Management in Windows to manage hard drives. A new hard drive needs to be initialized and partitioned before appear in Windows Explorer or Mac Desktop.

| Partition and Formatting

If your HDD has been partitioned, please connect directly with adapter to use. It will be showed "New Disk" in computer. If not, in the premise of system can correctly identify HDD, you can use the partition and formatting program of Windows to do it, or third-party software, Windows "Disk management", which located at "Administrative Tools" in Control Panel, Disk Management located on the left-hand side of the Computer Management window, under the Storage heading.



After operation finished, open My Computer, it will appear the 'New Disk' except the local disk, indicated that it connects computer successfully.

| Safely Disconnect

Windows: Double-click on the Safely Remove icon in your Windows System Tray. This will launch the Safely Remove program. Then click on the device you wish to remove and click on the Stop button.

Mac: In Mac OS the drive appears as an icon on the desktop. Before unplugging the drive, it needs to be dismounted by dragging the drive to the Trash Can, once the activity light has gone out, you can safely remove the drive.

| Warranty

1 Year limited Warranty. Our goods come with guarantees that cannot be excluded under the Australian Consumer Law. You are entitled to a replacement or refund for a major failure and for compensation for any other reasonably foreseeable loss or damage. You are also entitled to have the goods repaired or replaced if the goods fail to be of acceptable quality and the failure does not amount to a major failure.

For our assistance with regards to warranty please email to support@simplecom.com.au or create a support ticket at <http://www.simplecom.com.au>

Simplify Your Life

www.simplecom.com.au

© Simplecom Australia All Rights Reserved. Simplecom is a registered trademark of Simplecom Australia Pty Ltd. All other trademarks are property of their respective owner. Specifications and external appearance are subject to change without notice. Warranty and technical support covering this product are only valid in the country or region of purchase.

www.simplecom.com.au support@simplecom.com.au