



SA221 USB 3.0 to mSATA + M.2 (NGFF)  
2 in 1 Combo Adapter

User Manual

Simplify Your Life

Simplify Your Life

www.simplecom.com.au

© Simplecom Australia All Rights Reserved. Simplecom is a registered trademark of Simplecom Australia Pty Ltd. All other trademarks are property of their respective owner. Specifications and external appearance are subject to change without notice. Warranty and technical support covering this product are only valid in the country or region of purchase.

www.simplecom.com.au support@simplecom.com.au

Specifications

- Model: SA221
- Name: USB 3.0 to mSATA + M.2 (NGFF) Combo Adapter
- Interface: USB 3.0 (USB3.1 Gen 1)
- Compatible mSATA SSD: Full Size and Half Size mSATA
- Compatible M.2 SSD: SATA based M.2 (B Key or B+M Key) SSD
- Compatible M.2 size: 2230 / 2242 / 2260 / 2280

Features

- mSATA + M.2 SSD 2 in 1 Combo Adapter
- Convert a mSATA or M.2 SSD to USB 3.0
- Auto Switch when single mSATA or M.2 is installed
- LED indicates power and activity status
- Detachable USB 3.0 cable
- USB 3.0 (USB3.1 Gen 1) interface up to 5Gbps data transfer rate
- Plug and play, no drivers required
- Compatible with Windows 7 and above, Mac OS 10.6 and above

Package Contents

mSATA + M.2 to SATA Adapter	1Pcs
USB 3.0 to SATA Cable	1Pcs
Screw with Washer	1Pcs

Installation

- Place your M.2 or mSATA SSD next to the drive tray and note the hole that matches the height of your drive
- Plug your SSD into the corresponding connector on the tray, and secure it with included Screw and Washer if required
- Connect USB cable to the converter, then plug to USB port on computer

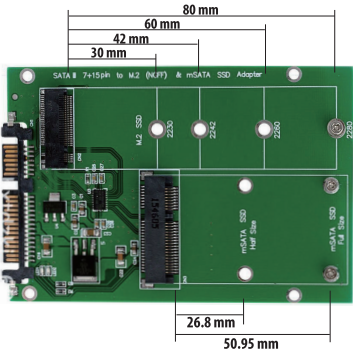


Note:

If both M.2 & mSATA SSD inserted at the same time the M.2 SSD will take priority. The mSATA SSD will be disabled until the M.2 SSD is removed.

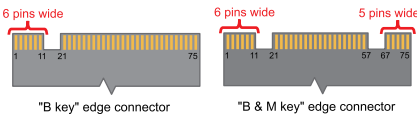
SSD Compatibility

Compatible M.2 SSD Size : 2230 / 2242 / 2260 / 2280  
Compatible mSATA SSD Size : Full Size (50.95mm), Half Size(26.8mm)



Note:

\*NOT Designed for NVMe PCIe M.2 SSD, will not fit M Key Only SSD Module. Compatible with SATA protocol based mSATA or M.2 (B Key Only or B+M key) SSD only.



Safely Disconnect

Windows: Double-click on the Safely Remove icon in your Windows System Tray. This will launch the Safely Remove program. Then click on the device you wish to remove and click on the Stop button.

Mac: In Mac OS the drive appears as an icon on the desktop. Before unplugging the drive, it needs to be dismantled by dragging the drive to the Trash Can, once the activity light has gone out, you can safely remove the drive.

Warranty

This product includes one (1) year repair/replacement warranty provide by Simplecom Australia. This warranty is non-transferable and is limited to the original purchaser.

Our goods come with guarantees that cannot be excluded under the Australian Consumer Law. You are entitled to a replacement or refund for a major failure and for compensation for any other reasonably foreseeable loss or damage. You are also entitled to have the goods repaired or replaced if the goods fail to be of acceptable quality and the failure does not amount to a major failure.

For our assistance with regards to warranty please email to support@simplecom.com.au or create a support ticket at http://www.simplecom.com.au