



NW811v2

AX1800 Dual Band WiFi 6 USB Adapter
with 2x 5dBi Antennas

NW811v2

Quick Installation Guide

Simplify Your Life

www.simplecom.com.au

Features

- New generation WiFi 6 USB adapter for PC and Laptop
- AX1800 supports up to 574Mbps at 2.4GHz and 1201Mbps at 5GHz
- Supports MU-MIMO for efficient connection in high density environments
- Supports WPA3 to provide enhanced network security against attacks
- Dual adjustable 5dBi antenna and USB extension cradle ensures strong WiFi signal
- Beamforming improves WiFi signal strength and range
- Backwards compatible with previous standard WiFi routers
- Ideal for HD streaming, online gaming and downloading
- Easy and automatic installation with built-in driver
- Support Windows 10 and above operating systems

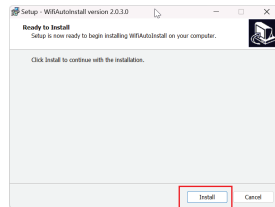
Specifications

- Model: NW811v2
- Interface: USB 3.2 Gen 1 (USB 3.0)
- WiFi Protocol: IEEE 802.11a/b/g, WiFi 4 (802.11n), WiFi 5 (802.11ac), WiFi 6 (802.11ax)
- WiFi Rate: up to 574Mbps (2.4GHz 802.11ax), 1201Mbps (5GHz 802.11ax), 867Mbps (5GHz 802.11ac)
- Antenna Type: 2x 5dBi adjustable high gain antennas
- Wireless Encryption: WPA2, WPA3
- Wireless Frequency: Dual band 2.4GHz & 5GHz
- Operating Temperature: 0 – 40°C
- Operating Humidity: 10% - 90% non-condensing
- System Requirements: Windows 10 and above

Driver Installation (Windows)

Note: This WiFi adapter supports Windows only, macOS and other systems are not supported

1. While plug this adapter to your computer first time, the installation program will be launched automatically from Virtual CD Drive if AutoRun is enabled on your PC. Then click **"Install"** to finish driver installation.



2. If AutoRun is disabled on your PC, or blocked by security software, you can manually open the Virtual CD Drive to install driver. You'll see there is a Virtual CD Drive **"Realtek"** under **"This PC"** on Windows 10 or 11, which contains the driver software for the adapter. You can launch installation by double clicking **"WifiAutoInstallSetup.exe"**.

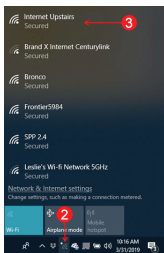


3. Virtual CD Drive will disappear after the driver is installed.

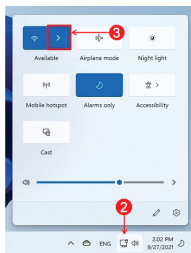
Note: Only Windows 10 and 11 are supported, you can also check latest driver from our website www.simplecom.com.au, search the model number **NW811v2**, then open product page, driver files are located under **DOWNLOAD** tab on product page.

Connect to WiFi

1. Click the network icon in system tray
2. Select your Wi-Fi SSID you want to connect

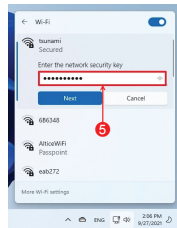
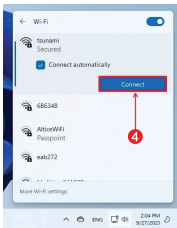


Windows 10



Windows 11

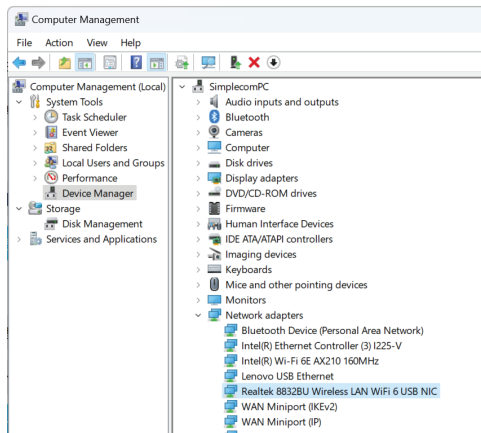
3. Check the "Connect automatically" option and click the "Connect"
4. Enter the network security key (password), then click "Next"



Once you complete the steps, the PC will connect to the network using the wireless connection.

Windows Device Manager

1. To open Device Manager on Windows 10 or 11, in the search box on the taskbar, type "**Device Manager**", then select from the menu.
2. Expand the "**Network adapters**" section. On a successful install, you should see the following device in the list
3. Please note driver only can be installed from auto installation program, the USB Wi-Fi adapter will not be recognized or listed with exclamation and question marks under Device Manager before installing the driver.



Warranty

1 Year limited Warranty. Our goods come with guarantees that cannot be excluded under the Australian Consumer Law. You are entitled to a replacement or refund for a major failure and for compensation for any other reasonably foreseeable loss or damage. You are also entitled to have the goods repaired or replaced if the goods fail to be of acceptable quality and the failure does not amount to a major failure.

For our assistance with regards to warranty please email to support@simplecom.com.au or create a support ticket at <http://www.simplecom.com.au>

© Simplecom Australia All Rights Reserved. Simplecom is a registered trademark of Simplecom Australia Pty Ltd. All other trademarks are property of their respective owner. Specifications and external appearance are subject to change without notice. Warranty and technical support covering this product are only valid in the country or region of purchase.