



NW608

AC1300 WiFi Dual Band USB 3.0 Adapter

Quick Installation Guide

Simplify Your Life

www.simplecom.com.au

About Product

NW608 is a dual-band, powerful and compact Wi-Fi adapter delivers high speed Wi-Fi wireless connection for computers, dual-band 2.4GHz and 5GHz operation with backwards compatibility with all your existing router.

Specifications

- Interface: USB 3.0 (compatible with USB 2.0)
- Protocol: IEEE 802.11ac, backward compatible with 802.11b/g/n
- Wireless Security: WPS, WEP, WPA/WPA2, WPA-PSK/WPA2-PSK
- Wireless Rate: 400Mbps@2.4GHz, 867Mbps@5GHz
- Antenna Type: : Internal 2dBi omni antenna
- System Requirements: Windows XP/Vista/7/8/8.1/10, Mac OS 10.9-10.15, Linux

Warranty

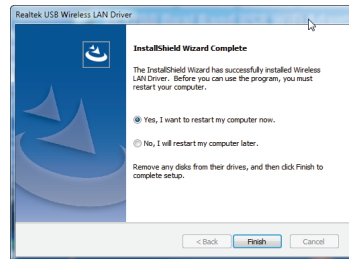
1 Year limited Warranty. Our goods come with guarantees that cannot be excluded under the Australian Consumer Law. You are entitled to a replacement or refund for a major failure and for compensation for any other reasonably foreseeable loss or damage. You are also entitled to have the goods repaired or replaced if the goods fail to be of acceptable quality and the failure does not amount to a major failure. For our assistance with regards to warranty please email to support@simplecom.com.au or create a support ticket at <http://www.simplecom.com.au>

Installation (Windows)

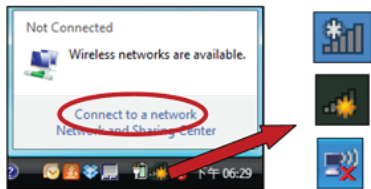
1. Open the driver installation program from the AutoRun Menu or double click "Setup.exe" under "Windows" folder, restart computer if required after installation

Note:

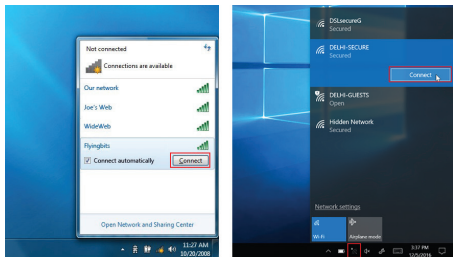
WiFi driver will be automatically installed on Windows 10, you can also manually install the WiFi driver from CD or get from our website.



2. Click the network icon in system tray and select "connect to a network"



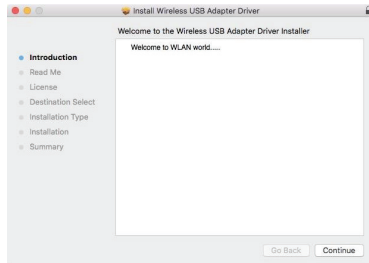
3. Select your Wi-Fi SSID and then click "Connect"



4. After correctly entering your Wi-Fi password, you will be successfully connected to your Wi-Fi network

Installation (Mac)

1. Open the driver installation program under "Mac" folder on CD, and double click the "Installer.pkg" file to open the driver installation wizard. Follow the wizard and click "Continue".



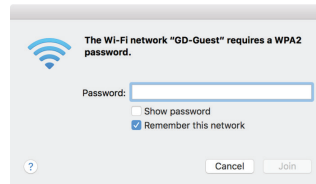
2. You may be prompted to enter system password before installation start, please input your user name and password, then click Install



4. Click the USB adapter icon from the menu in the top right of your Mac desktop, select WiFi network you want to connect.



5. Enter WiFi password to join the network



© Simplecom Australia All Rights Reserved. Simplecom is a registered trademark of Simplecom Australia Pty Ltd. All other trademarks are property of their respective owner. Specifications and external appearance are subject to change without notice. Warranty and technical support covering this product are only valid in the country or region of purchase.