



NW106 AX300 Wi-Fi 6 Wireless Nano USB Adapter

NW106

Quick Installation Guide

Simplify Your Life

www.simplecom.com.au

Features

- Ultra compact Wi-Fi 6 USB wireless adapter for PC or laptop
- Supports 802.11ax at 2.4GHz for smooth and stable wireless connections
- Backward compliant with 802.11b/g/n standards
- AX300 speed with maximum data transfer rate up to 286Mbps
- Nano size form factor, ideal for PC or laptop with tight USB space
- Save time and hassle with on-board driver installation
- Compatible with Windows 7/10/11 operating systems

Specifications

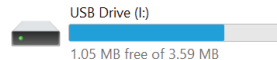
- Model: NW106
- Interface: USB 2.0
- Chipset: AIC8800
- Wireless Protocol: IEEE 802.11b, 802.11g, 802.11n, 802.11ax
- Wireless Frequency: 2.4GHz*
- Wireless Data Rate: up to 286Mbps
- Wireless Transmit Power: 20dBm (MAX EIRP)
- Wireless Security: WEP, WPA, WPA2
- Operating Temperature: 0 - 40°C
- Operating Humidity: 10% - 90% non-condensing
- Operating System Support: Windows 7/10/11
- Dimension: 20x15x6mm
- Weight: 3g

*This adapter is single band and supports Wi-Fi 6 at 2.4GHz only, 5GHz is not supported

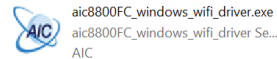
Driver Installation (Windows)

Note: This WiFi adapter supports Windows only, macOS and other systems are not supported.

1. While plug this adapter to your computer first time, you'll see there is a new small size USB drive with about 4MB capacity under **"This PC"** (Windows 10/11) or **"Computer"** (Windows 7) which contains the driver software for the adapter.



2. Open the USB drive and double click setup file **"aic8800FC_windows_wifi_driver.exe"** to install the driver software for Windows.



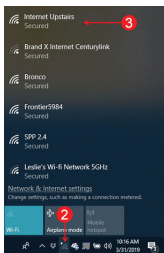
3. After driver installed, you may need to restart PC to make the adapter effective.

4. The USB Drive will disappear after the driver is installed.

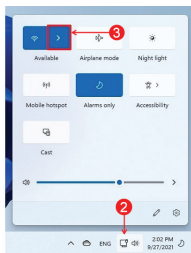
Note: you can also download and check latest driver from our website www.simplecom.com.au, search the model number **NW106**, then open product page, driver files are located under **DOWNLOAD** tab on product page.

Connect to WiFi

1. Click the network icon in system tray
2. Select your Wi-Fi SSID you want to connect

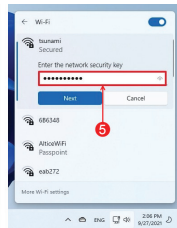
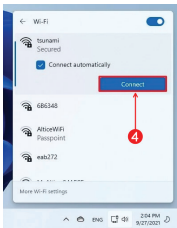


Windows 10



Windows 11

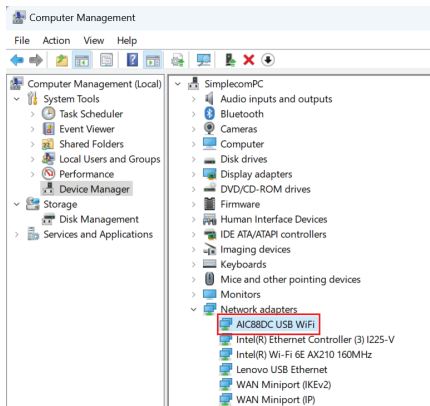
3. Check the "Connect automatically" option and click the "Connect"
4. Enter the network security key (password), then click "Next"



Once you complete the steps, the PC will connect to the network using the wireless connection.

Windows Device Manager

1. To open Device Manager on Windows, in the search box on the taskbar, type "**Device Manager**", then select from the menu.
2. Expand the "**Network adapters**" section. On a successful install, you should see the following device in the list
3. Please note driver only can be installed from auto installation program, the USB Wi-Fi adapter will not be recognized or listed with exclamation and question marks under Device Manager before installing the driver.



Warranty

1 Year limited Warranty. Our goods come with guarantees that cannot be excluded under the Australian Consumer Law. You are entitled to a replacement or refund for a major failure and for compensation for any other reasonably foreseeable loss or damage. You are also entitled to have the goods repaired or replaced if the goods fail to be of acceptable quality and the failure does not amount to a major failure.

For our assistance with regards to warranty please email to support@simplecom.com.au or create a support ticket at <http://www.simplecom.com.au>

© Simplecom Australia All Rights Reserved. Simplecom is a registered trademark of Simplecom Australia Pty Ltd. All other trademarks are property of their respective owner. Specifications and external appearance are subject to change without notice. Warranty and technical support covering this product are only valid in the country or region of purchase.