

## About Product

NB510 is a USB adapter featuring advanced Bluetooth 5.1 capabilities for latest Windows systems. It provides better performance, higher data transfer rate and lower energy consumption. Easy to pair multiple devices to your PC with this Bluetooth 5.1 dongle, and enable wireless connectivity with wide range of Bluetooth devices. It supports Bluetooth Low Energy (BLE) to reduce power consumption. It also maintains fully backward compatibility with Bluetooth 4.0, 3.0 and 2.0.

## Important Note

- This adapter is designed for Windows 10 and 11 operating systems only, legacy versions of Windows are NOT supported.
- To avoid software confliction, please uninstall any previous Bluetooth driver software installed on your computer prior to installing this new Bluetooth 5.1 adapter.
- This adapter is plug and play for Windows 10 and 11 operating systems, and it will be installed automatically when plugged into computer (internet connection is required).
- You can download software driver from our website ([www.simplecom.com.au](http://www.simplecom.com.au)) if you need to manually install the Bluetooth driver software.

## Features

- Designed for PC or Laptop to support Bluetooth connectivity
- Support Bluetooth 5.1, backwards compatible with 2.0/3.0/4.0
- Faster discovery speed and less energy consumption
- Support LMP Version 10 (Link Manager Protocol)
- Class II power standard, signal range of up to 20 metres
- Supports A2DP stereo playback
- EDR data rate up to 3Mbps
- Gold plated USB connector
- Plug and play for Windows 10 and 11 operating systems

## Specifications

- Bluetooth Protocol: Bluetooth V5.1 (Dual Mode)
- Interface: USB 2.0
- Input Power: USB 5V (USB Power)
- Operating Frequency: 2.402-2.480 GHz
- Transmission Range: 10 - 20M
- Sensitivity: -86dBm@0.1%BER
- Profiles: SPP, BLE, ANCS, HFP, HCRP, A2DP, AVRCP
- Operating Temperature: -10 - 50 Celsius
- Supported OS: Windows 10/11 (32/64bit)

## System Requirement

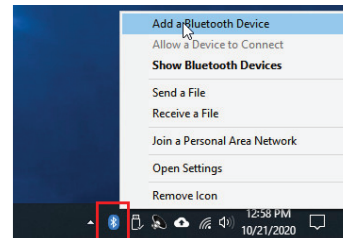
- Supported Operating System: Windows 10/11 (32/64 bit)
- CPU Speed: 500MHz or higher
- Hard Drive Space: 500 MB
- RAM: 2GB or more

## Package Contents

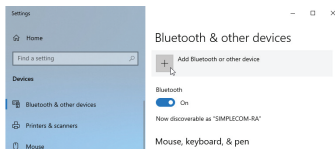
- 1 x NB510 Bluetooth 5.1 USB Adapter
- 1 x User Manual

## Pairing Bluetooth Device

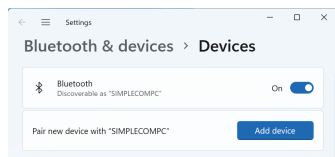
1. Right Click the Bluetooth icon in system tray at right side of the taskbar, then click "Add a Bluetooth Device"



## 2. Add bluetooth device on Windows 10/11

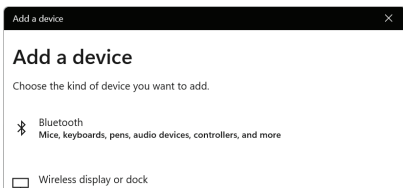


Click "Add Bluetooth or other device" on Windows 10

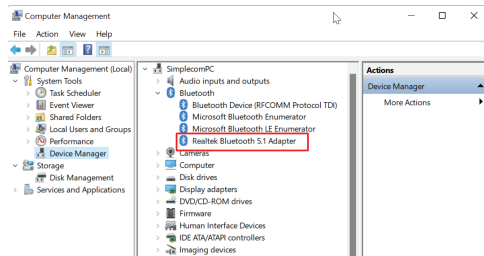


Click "Add device" on Windows 11

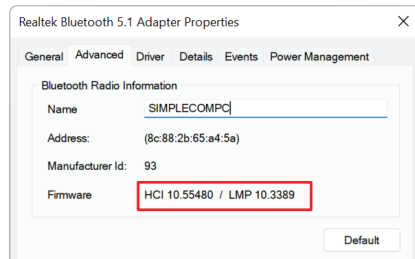
3. Select "Bluetooth" in the Add a device window, then wait while your PC or laptop scans the Bluetooth devices nearby. Find the name of the device you want to connect to.



4. To verify installation, open Windows Device Manager, you will see "Realtek Bluetooth 5.1 Adapter" under Bluetooth section



Right click "Realtek Bluetooth 5.1 Adapter" under Windows Device Manager and click Properties, select the "Advanced" tab, then look for the LMP (Link Manager Protocol) listing in the Firmware or Firmware version area. If the number is above LMP 10, your Bluetooth adapter is running at Bluetooth 5.1 mode.



## FAQ

### Does it support Windows 7 or 8?

No, this adapter is designed for Windows 10 and 11 operating systems only, legacy versions of Windows are NOT supported.

### How to install the driver software?

This adapter is plug and play for Windows 10 and 11 operating systems, and no need to install driver manually, it will be installed automatically when plugged into computer (internet connection is required).

### Why am I experiencing short range and audio cut-offs?

This might happen if the adapter is connected to the back of a desktop computer, where there is a lot of random radio noise generated by the PC components. You can move the adapter to front USB port, or use a USB extension cable to move the adapter away from back of PC. Also, USB 3.0 ports will cause more radio interference than USB 2.0. If your device is having range issues when plugged into a USB 3.0 port, change to a USB 2.0 port often helps.

### Why can't I pair this dongle with my Bluetooth headphones/speakers?

1. To avoid software confliction, please uninstall any previous Bluetooth driver software installed on your computer prior to installing this new Bluetooth 5.1 adapter.
2. Make sure your Bluetooth headphones/speakers are in pairing mode. Note that powering them on doesn't automatically mean they're in pairing mode.
3. If they're connected, but there is no sound, please verify that the Bluetooth device is set as the "Default playback device" in your windows audio settings.

## Warranty

1 Year limited Warranty. Our goods come with guarantees that cannot be excluded under the Australian Consumer Law. You are entitled to a replacement or refund for a major failure and for compensation for any other reasonably foreseeable loss or damage. You are also entitled to have the goods repaired or replaced if the goods fail to be of acceptable quality and the failure does not amount to a major failure.

For our assistance with regards to warranty please email to [support@simplecom.com.au](mailto:support@simplecom.com.au) or create a support ticket at <http://www.simplecom.com.au>

© Simplecom Australia All Rights Reserved. Simplecom is a registered trademark of Simplecom Australia Pty Ltd. All other trademarks are property of their respective owner. Specifications and external appearance are subject to change without notice. Warranty and technical support covering this product are only valid in the country or region of purchase.