



NB409 USB Bluetooth 5.0 Adapter

User Manual

Simplify Your Life

www.simplecom.com.au

Simplify Your Life

www.simplecom.com.au

© Simplecom Australia All Rights Reserved. Simplecom is a registered trademark of Simplecom Australia Pty Ltd. All other trademarks are property of their respective owner. Specifications and external appearance are subject to change without notice. Warranty and technical support covering this product are only valid in the country or region of purchase.



www.simplecom.com.au



support@simplecom.com.au

System Requirement

- Supported Operating System: Windows 7/8/10 (32/64 bit), Linux (Beta Driver Only)
- CPU Speed: 500MHz or higher
- Hard Drive Space: 500 MB
- RAM: 1GB or more

Package Contents

- 1 x NB409 Bluetooth 5.0 USB Adapter
- 1 x Driver CD



Installation

To avoid software confliction, please uninstall any previously installed third-party Bluetooth drivers or management software on your computer before installing the NB409 driver software.

The Default Bluetooth drivers provided by Microsoft Windows have limited functionality, it will installed automatically after you inserting the USB adapter, you still need to install the full driver software on CD if you want to access full functionality (more Bluetooth profiles supported).

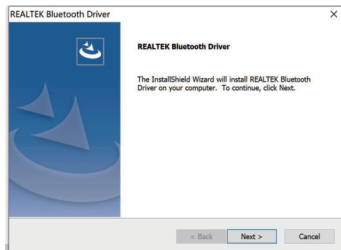
• Installing Drivers from the CD

- If Autorun is enabled, choose Drivers from the menu.
- If Autorun is disabled, open the CD in Windows Explorer and run Setup.exe under Windows folder

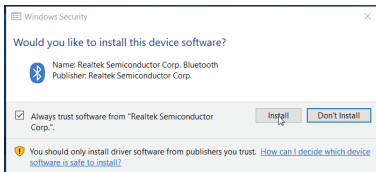


• Auto Installation Program

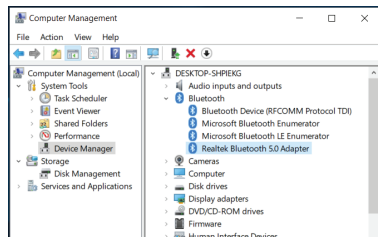
Click Next to start installation



Click Install if there is a Warning window, check Always Trust software from "Realtek Semiconductor Corp", you need to restart the computer after installation finished.

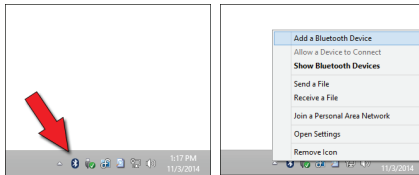


You will find "Realtek Bluetooth 5.0 Adapter" under Device Manager after driver software installed successfully.

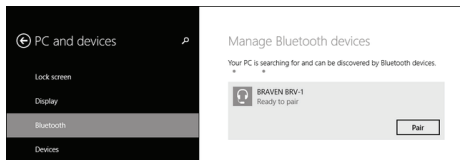


Pair Your Devices

The Bluetooth icon should appear in the system tray after driver installed. Right-click the icon and choose "Add a Bluetooth Device" from the context menu.



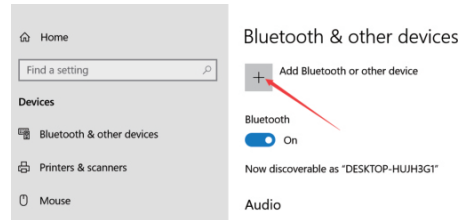
If you're using Windows 8 or 10, you'll see a screen like below. Just click the Pair button for the device you want to connect.



If you're using Windows 7, you'll see a similar screen, select the device you want to connect and then click Next.

• Pairing a Device that Doesn't Show Up Automatically

If for some reason your device doesn't appear below, click the "Add Bluetooth or Other Device" button located at the top of the Settings window.



Warranty

1 Year limited Warranty. Our goods come with guarantees that cannot be excluded under the Australian Consumer Law. You are entitled to a replacement or refund for a major failure and for compensation for any other reasonably foreseeable loss or damage. You are also entitled to have the goods repaired or replaced if the goods fail to be of acceptable quality and the failure does not amount to a major failure.

For our assistance with regards to warranty please email to support@simplecom.com.au or create a support ticket at <http://www.simplecom.com.au>

© Simplecom Australia All Rights Reserved. Simplecom is a registered trademark of Simplecom Australia Pty Ltd. All other trademarks are property of their respective owner. Specifications and external appearance are subject to change without notice. Warranty and technical support covering this product are only valid in the country or region of purchase.

 www.simplecom.com.au  support@simplecom.com.au