



DA327 USB 3.0 or USB-C to Dual HDMI Display Adapter

DA327

User Manual

Simplify Your Life

www.simplecom.com.au

About Product

DA327 is a USB 3.0 to dual HDMI external graphic card adapter with USB-C and USB-A combo connector, that lets you to connect any laptop or desktop PC with an available USB-A or USB-C port. This adapter is able to output two extended displays on two separate screens, enabling two Full HD 1080p displays from a single USB 3.0 connection.

Features

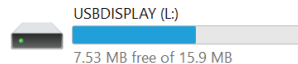
- Adding up to two HDMI monitors to your laptop or desktop PC
- Enabling two Full HD 1080p displays from a single USB 3.0 connection
- Dedicated graphic processor and doesn't rely on PC's graphic processor
- USB-C and USB-A combo connector, easily connect to laptop or desktop
- Two HDMI ports support up to 1080p@60Hz on both extended screens
- Significantly increase productivity by adding two extended screens
- Integrated stereo audio over HDMI ports
- Aluminum casing, durable and better heat dissipation
- Easy driver installation from built-in USB flash drive
- Compatible with Window 10 and 11 desktop or laptop PC

System Requirements

- Compatible with Windows 10 and 11, legacy versions Windows 7/8 are Not supported, Linux, macOS and ChromeOS are Not supported.
- Windows laptop or desktop with available SuperSpeed USB 3.0 port or USB-C port, DP Alt mode is Not required when using USB-C

Installation

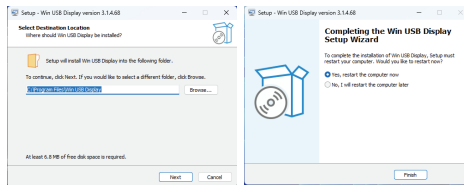
1. While plug this adapter to your computer first time, you'll see there is a new small size USB Drive with label **"USBDISPLAY"** under This PC (Windows 10/11), which contains the driver software for the adapter.



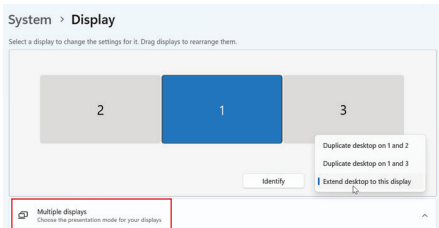
2. Open the **"USBDISPLAY"** drive and double click setup file **"USBDISPLAY_Windows_V3"** to install the driver software for Windows PC. Click **"Install"** if any warning windows popup.



3. After driver installed, you **MUST** restart PC to make the adapter effective.



4. Right Click Desktop and click **"Display Setting"** (Windows 10/11) to setup extended or mirror display.



5. You can use the mouse to drag the three monitor icons to adjust their position
6. You can select the options in "**Multiple Displays**" to set any one of them as the main display.

Important Notes

- Driver installation is required prior to using this adapter
- Please avoid using a USB hub and plug this adapter directly into the USB port on your desktop or laptop computer.
- This adapter is powered by USB host, and it does not require external power normally, the USB-C port on this adapter is for backup power only when the USB host can't supply enough power.

FAQ

Do I need to install driver software?

Yes, you need to install the driver software from built-in USB flash Drive, or download from our website.

How to install Driver?

While plug this adapter to your computer first time, you'll see there is a new small size USB Drive with label "USBDISPLAY" under This PC (Windows 10/11), which contains the driver software for the adapter. double clicks setup file (USBDisplay_Windows_Vx.x.exe) inside USB drive to install the driver. You can also download from our website.

Does it require external power?

This adapter is powered by USB host, and it does not require external power normally, the USB-C port on this adapter is for backup power only when the USB host can't supply enough power.

Does it work with USB 2.0 Port?

Yes, it's compatible with both USB 2.0 but output resolution will be limited to 720p.

Screen can't be detected after driver installed?

You need to restart PC after driver installed. If the problem still persists, try to uninstall the driver and install again.

How to enable extended display on Windows?

Try to click WIN + P keys (in Windows 10/11) and check what options of display you have. If you do not see the second screen, go to "Settings -> System -> Display" and try to detect the second screen there.

Can it support Windows 7/8?

No, this USB to Dual HDMI adapter works on Windows 10 and 11 only, legacy versions Windows 7/8 are Not supported.

Can it support macOS?

macOS doesn't support extended display mode.

Warranty

1 Year limited Warranty. Our goods come with guarantees that cannot be excluded under the Australian Consumer Law. You are entitled to a replacement or refund for a major failure and for compensation for any other reasonably foreseeable loss or damage. You are also entitled to have the goods repaired or replaced if the goods fail to be of acceptable quality and the failure does not amount to a major failure.

For our assistance with regards to warranty please email to support@simplecom.com.au or create a support ticket at <http://www.simplecom.com.au>

© Simplecom Australia All Rights Reserved. Simplecom is a registered trademark of Simplecom Australia Pty Ltd. All other trademarks are property of their respective owner. Specifications and external appearance are subject to change without notice. Warranty and technical support covering this product are only valid in the country or region of purchase.

