



DA316A USB to HDMI + VGA Adapter with 3.5mm Audio

User Manual

Simplify Your Life

www.simplecom.com.au

About Product

This USB to HDMI+VGA adapter turns an available standard size USB-A port into an HDMI or VGA output with high resolution up to 1080p. Compatible with regular USB 2.0 or USB 3.0 port, it's an easy way to connect HDMI or VGA display to any PC that require additional display. It also has a built-in 3.5mm audio jack, which can be connected to external speaker or headphones.

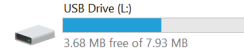


Features

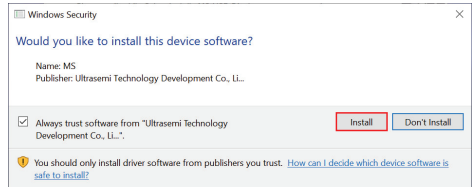
- Compatible with standard size USB 2.0 or USB 3.0 port
- Support resolution up to 1080p (1920x1080)
- Simple installation, built-in USB flash drive for driver software
- USB powered, no external power required
- HDMI port supports both video and audio, VGA output video only
- 3.5mm headphones jack for audio output
- HDMI and VGA ports can output same screen simultaneously
- Support Extended or Mirror display mode
- Compatible with Windows 7 and above

Installation

1. While plug this adapter to your computer first time, you'll see there is a new small size "USB Drive" under My Computer (Windows 7) or This PC (Windows 10), which contains the driver software for the adapter.



2. Open the "USB Drive" and double click setup file on USB flash drive to install the driver software. Click "Install" if any warning windows popup.



3. After driver installed, you MUST restart PC to make the adapter effective.

4. Right Click Desktop and click "Display Setting" (Windows 10) or "Screen Resolution" (Windows 7) to setup extended or mirror

FAQ

Is this adapter plug and play?

No, you need to install the driver software from built-in USB flash drive, or download from web.

How to install Driver?

While plug this adapter to your computer first time, you'll see there is a new "USB Drive" under My Computer (Windows 7) or This PC (Windows 10), which contains the driver software for the adapter.

Why installation program won't start?

If you have any trouble to install the driver software, try to turn off anti-virus software and low down the firewall level before install the driver. You can turn on again after installation.

Screen can't be detected after driver software installed?

You need to restart PC after driver installed. If the problem still persists, try to uninstall the driver and install again.

Does it work with USB 2.0 Port?

Yes, it's compatible with both USB 2.0 and USB 3.0.

Can it support Windows XP and Vista?

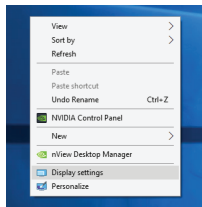
No, this USB to HDMI VGA adapter works on Windows 7 and above, old version Windows XP and Vista are not supported.

Can HDMI and VGA post display two extended screen?

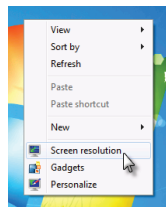
No, this adapter only supports ONE extended screen, HDMI and VGA ports only can output same screen. You can choose mirror (AAA), or extended (ABB) mode.

Where to setup Extend or Mirror Mode on Windows?

You can right click Desktop and click option from menu



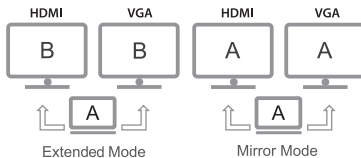
Windows 10
Display Setting



Windows 7
Screen Resolution

Display Mode

Windows supports ONE Extended mode



Warranty

1 Year limited Warranty. Our goods come with guarantees that cannot be excluded under the Australian Consumer Law. You are entitled to a replacement or refund for a major failure and for compensation for any other reasonably foreseeable loss or damage. You are also entitled to have the goods repaired or replaced if the goods fail to be of acceptable quality and the failure does not amount to a major failure.

For our assistance with regards to warranty please email to support@simplecom.com.au or create a support ticket at <http://www.simplecom.com.au>

© Simplecom Australia All Rights Reserved. Simplecom is a registered trademark of Simplecom Australia Pty Ltd. All other trademarks are property of their respective owner. Specifications and external appearance are subject to change without notice. Warranty and technical support covering this product are only valid in the country or region of purchase.