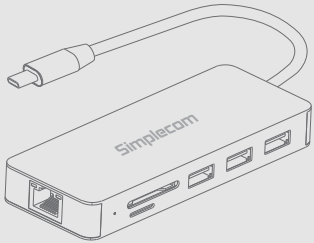




CHN580 USB-C SuperSpeed 8-in-1 Multiport Adapter

User Manual



www.simplecom.com.au

About Product

With the CHN580 8-in-1 USB-C Multiport Adapter, you can get the most out of your laptop through USB-C port. It turns a single USB-C port into 8 ports, including 3 USB-A port, 2 card slots for data transfer, HDMI Display expansion, Gigabit Ethernet, and PD charging.

If you need to connect with various devices to your laptop at same time, CHN580 is a comprehensive connectivity solution that helps you do more with the devices you already have to increase productivity and convenience.

System Requirements

- Available USB-C port on PC, Mac, Phone or Tablet with DisplayPort Alternate Mode support
- Operating system: Windows 7 or above, MacOS 10.7.1 or above, Android

Important Note

- USB-A ports supports multiple flash drives, but can only support one USB hard drive at any time due to the power.
- Please connect power delivery adapter when using more than one high powered devices e.g. USB hard drive
- Don't recommend for charging iPad, tablet or other high power USB devices

Features

- **Enhanced Compatibility**
Support DisplayPort Alternate Mode (DP Alt Mode) enabled devices with USB-C port, such as Windows laptop, MacBook, Chromebook, smartphone and more. It also compatible with game console like Nintendo Switch (HDMI output only).
- **4K HDMI Video Output**
Enjoy an HD film at home by connecting a tablet or ultrabook to TV via the 4K video adapter! The adapter can also be used at various occasions, such as on a meeting to project files and slideshows to a larger screen by connecting to a projector.
- **3 Port USB-A Hub**
3 USB-A port with a maximum transfer speed up to 5Gbps. It allow you to connect keyboard, mouse, thumb drive or other USB devices.
- **USB-C Power Delivery**
The USB-C PD Port can charge your connected device while other ports are working. The USB-C port supports up to 100W Power Delivery charging.
- **Aluminium Casing**
To ensure stable performance and protect the circuit, the metal shell facilitates the heat dissipation when the chip and hub work.

Simplify Your Life

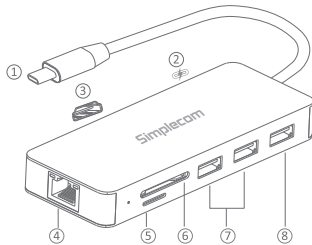
www.simplecom.com.au

© Simplecom Australia All Rights Reserved. Simplecom is a registered trademark of Simplecom Australia Pty Ltd. All other trademarks are property of their respective owner. Specifications and external appearance are subject to change without notice. Warranty and technical support covering this product are only valid in the country or region of purchase.

www.simplecom.com.au support@simplecom.com.au

Specifications

- USB Hub: 3x USB-A Female (2xSuperSpeed 5Gbps, 1xHighSpeed 480Mbps)
- HDMI Video Resolutions: Support up to 3840 x 2160p at 30 Hz (4K@30Hz)
- RJ45 Port: Gigabit Ethernet (10/100/1000 Mbps)
- Card Reader: SD and MicroSD (SuperSpeed 5Gbps)
- PD Charging: USB-C Female (for charging only), up to 100W
- Operation Temperature: 0 - 45°C
- Dimensions: 115 x 46 x 15 mm
- Cable Length: 15 cm (11.8 in.)
- Weight: 79 g
- Housing: Aluminium



1. USB-C Input
2. USB-C PD Charging
3. HDMI Output
4. Gigabit Ethernet
5. MicroSD Slot
6. SD Slot
7. USB-A SuperSpeed
8. USB-A HighSpeed

FAQ

*What do I need to know before using this adapter?

Please confirm the USB-C port on your device supports DisplayPort Alternate Mode (DP Alt Mode). Some USB-C ports only work for charging or data transfer, no video output function.

What is DP Alt Mode?

At its most basic level, DP Alt Mode means that device manufacturers would no longer need to put dedicated display ports (whether DisplayPort, VGA, or HDMI) on their devices, and could instead fill out their devices entirely with USB port for all digital I/O.

Does the USB-C female port on this hub support data transfer?

No, the USB-C female port is only for Power Delivery.

Can I have all ports plugged in at once?

Yes,. Please have your PD power adapter plugged in if try it with high powered devices. e.g. USB Hard drive. The power required by USB hard drive can be very high. For stable connection, please connect the USB-C Female Power Delivery Port to the power adapter when a USB hard drive is connected to the devices.

I use it on Macbook and got message "USB Devices Disabled"

Since the current output of the new Macbook is about 1.5A, when the load exceeds 1.5A, the computer will start the self-protection function. Please restart your laptop and connect the PD before plug any other port.

My laptop support DP Alt Mode, but still no display from HDMI port?

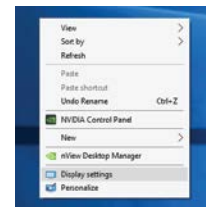
First, make sure that the USB-C multiport adapter is connected to your laptop's USB-C port with DP Alt Mode support (normally only one USB-C port on laptop support display output).

It is possible that the extended display is disabled on your computer. Try to click WIN + P keys (in Windows 10) and check what options of display you have.

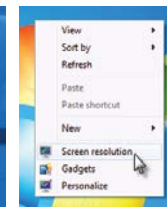
If you do not see the second screen, go to "Settings -> System -> Display" and try to detect the second screen there.

Where to setup Extend or Mirror Mode on Windows?

You can right click Desktop and click option from menu



Windows 10 Display Setting



Windows 7 Screen Resolution

Warranty

1 Year limited Warranty. Our goods come with guarantees that cannot be excluded under the Australian Consumer Law. You are entitled to a replacement or refund for a major failure and for compensation for any other reasonably foreseeable loss or damage. You are also entitled to have the goods repaired or replaced if the goods fail to be of acceptable quality and the failure does not amount to a major failure.

For our assistance with regards to warranty please email to support@simplecom.com.au or create a support ticket at http://www.simplecom.com.au

© Simplecom Australia All Rights Reserved. Simplecom is a registered trademark of Simplecom Australia Pty Ltd. All other trademarks are property of their respective owner. Specifications and external appearance are subject to change without notice. Warranty and technical support covering this product are only valid in the country or region of purchase.

www.simplecom.com.au support@simplecom.com.au