

Simplecom®

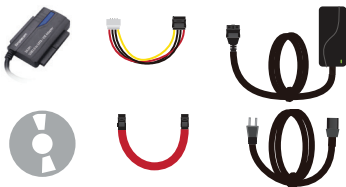
SA391 USB3.0 to SATA / IDE Adapter

User Manual



For 2.5", 3.5" & 5.25" SATA and IDE HDD, SSD & ODD

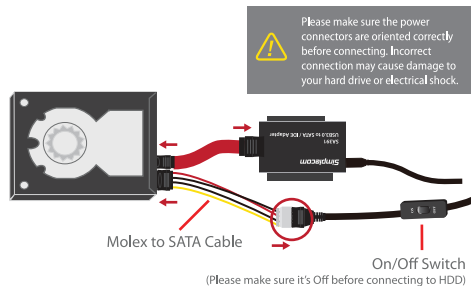
Package Contents



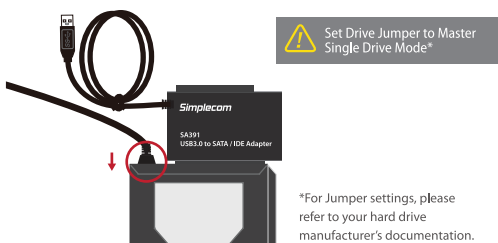
- 1x USB3.0 to IDE / SATA Adapter
- 1x Power Adapter with IDE Molex connector
- 1x Power Cord
- 1x SATA-to-SATA data cable
- 1x IDE Molex connector to SATA power connector cable
- 1x Mini-CD containing OTB Software*

*AI-OTB is an optional software for OTB (One Touch Backup) button, you don't have to install it if you don't use OTB function, it's not required driver for the adapter, adapter is plug and play and no driver needed.

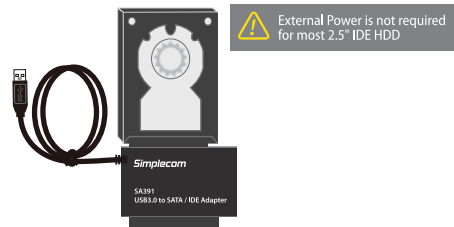
For 2.5"/3.5"/5.25" SATA Device



For 3.5"/5.25" PATA(IDE) Device



For 2.5" PATA(IDE) Device

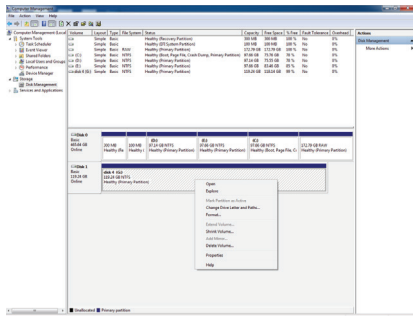


Connect to PC via USB Cable

1. Once securely connected, you may connect the adapter's USB to a free USB port on your PC, then switch ON the power adapter.
2. When connected properly, the hard drive should be automatically detected and begin "AutoPlay".
3. If you can't find the drive, you may need to open Disk Management in Windows to manage hard drives. A new hard drive needs to be initialized and partitioned before appear in Windows Explorer or Mac Desktop.

Partition and Formatting

If your HDD has been partitioned, please connect directly with adapter to use. It will be showed "New Disk" in computer. If not, in the premise of system can correctly identify HDD, you can use the partition and formatting program of Windows to do it, or third-party software, Windows "Disk management", which located at "Administrative Tools" in Control Panel, Disk Management located on the left-hand side of the Computer Management window, under the Storage heading.

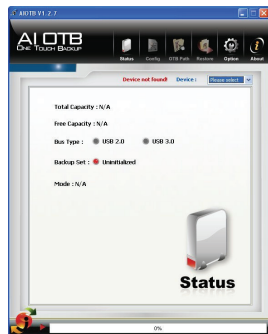


After operation finished, open My Computer, it will appear the 'New Disk' except the local disk, indicated that it connects computer successfully.

Install the OTB Software (Optional)

The OTB (One Touch Back) Software is included on CD. AI-OTB is a free program that enables you to backup your entire hard disk. The program has a friendly UI to setup data path for backup, you can select the file and folders that you want to backup and save the configuration. The program also allows you to use two or more device to backup different data path on one computer.

Start AI-OTB



Select Target drive letter, after selecting drive letter, the Config, OTB Path and Restore will be enabled.

Safely Disconnect

Windows: Double-click on the Safely Remove icon in your Windows System Tray. This will launch the Safely Remove program. Then click on the device you wish to remove and click on the Stop button.

Mac: In Mac OS the drive appears as an icon on the desktop. Before unplugging the drive, it needs to be dismounted by dragging the drive to the Trash Can, once the activity light has gone out, you can safely remove the drive.

Warranty

1 Year limited Warranty. Our goods come with guarantees that cannot be excluded under the Australian Consumer Law. You are entitled to a replacement or refund for a major failure and for compensation for any other reasonably foreseeable loss or damage.

You are also entitled to have the goods repaired or replaced if the goods fail to be of acceptable quality and the failure does not amount to a major failure.

For our assistance with regards to warranty please email to support@simplecom.com.au or create a support ticket at http://www.simplecom.com.au

Simplify Your Life

www.simplecom.com.au

© Simplecom Australia All Rights Reserved. Simplecom is a registered trademark of Simplecom Australia Pty Ltd. All other trademarks are property of their respective owner. Specifications and external appearance are subject to change without notice. Warranty and technical support covering this product are only valid in the country or region of purchase.

 www.simplecom.com.au  support@simplecom.com.au